

# Firmware Upgrade Process

## ◆ Via RS232 cable

**Step1.** Connect the unit and the PC via RS232 cable, and utility power to AC terminal, switches AC breaker on. Please refer to picture as below.

**NOTE:** There is no NEED to turn off the unit when updating the LCD program. Keeping the unit up and running and make sure the LCD lights normally.



Figure 1

**Step2.** Please check the COM Port Number as below pictures.

**NOTE:** Make sure all communication applications which use this COM port are turned off. The application software includes inverter monitoring application software.

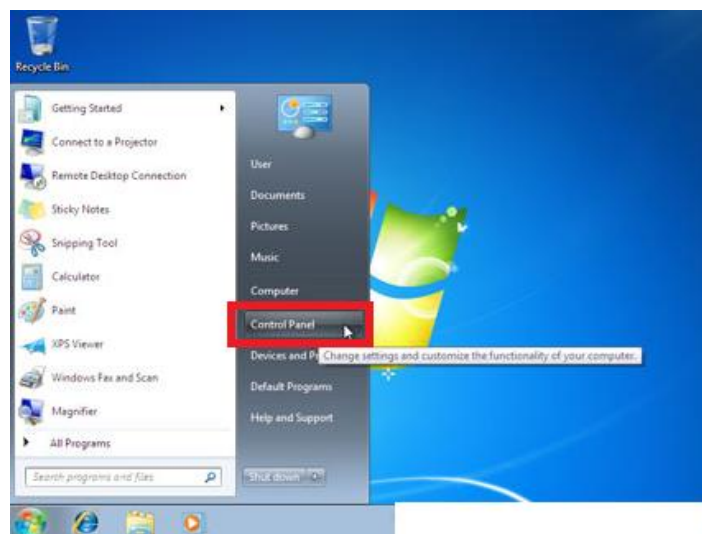


Figure 2



Figure 3

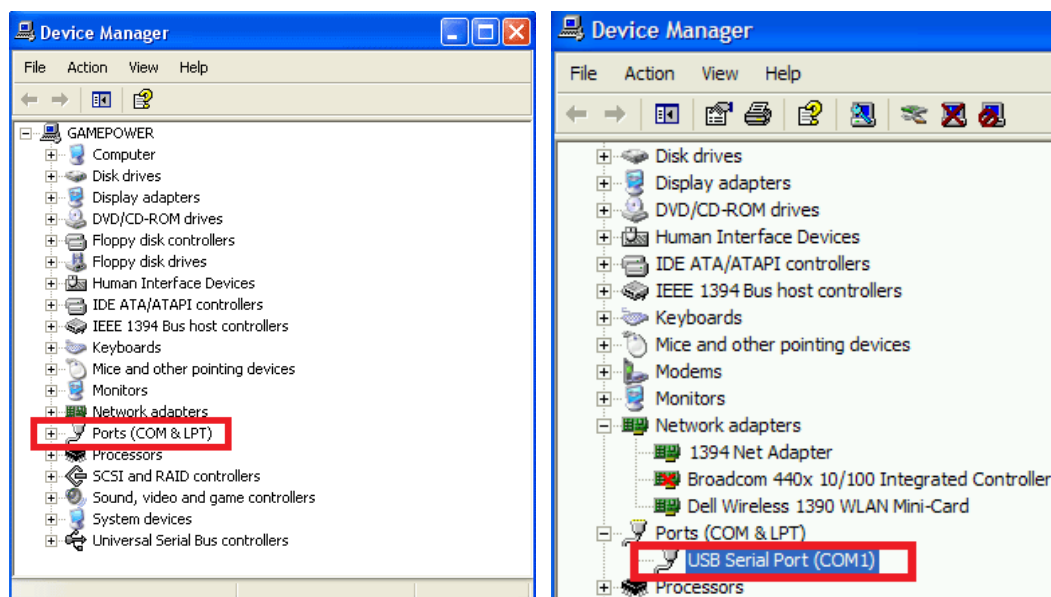


Figure 4

**Step3.** Double left click the "Reflash" folder, and open the "ReflashTool\_Xseries.exe" to run the program. Please refer to below picture.

名稱	修改日期	類型	大小
dsp.hex	7/23/2019 2:06 P...	HEX 檔案	417 KB
hex2000.exe	6/28/2006 8:28 A...	應用程式	121 KB
hexbin2.exe	4/27/2011 11:40 ...	應用程式	14 KB
Inv.cmd	11/12/2015 7:34 ...	Windows 命令指...	1 KB
MFC42D.DLL	6/17/1998 12:00 ...	應用程式擴充	909 KB
MFCO42D.DLL	6/17/1998 12:00 ...	應用程式擴充	781 KB
MSVCRD.DLL	6/17/1998 12:00 ...	應用程式擴充	377 KB
ReflashTool_Xseries.exe	9/13/2012 6:36 P...	應用程式	149 KB
winmm.dll	4/14/2008 8:00 P...	應用程式擴充	160 KB
编译.bat	6/8/2011 11:24 A...	Windows 批次檔案	1 KB

Figure 5

**Step4.** Click “Update” to upgrade firmware. Please refer to below picture.

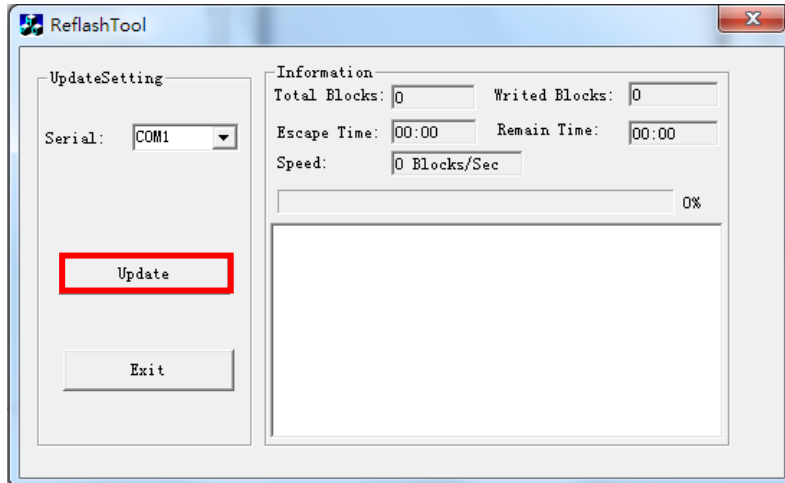


Figure 6

Please wait for about ten seconds. The update will be in progress, LCD will display “UPG YES” and Setting LED 1 will flash once 500ms.

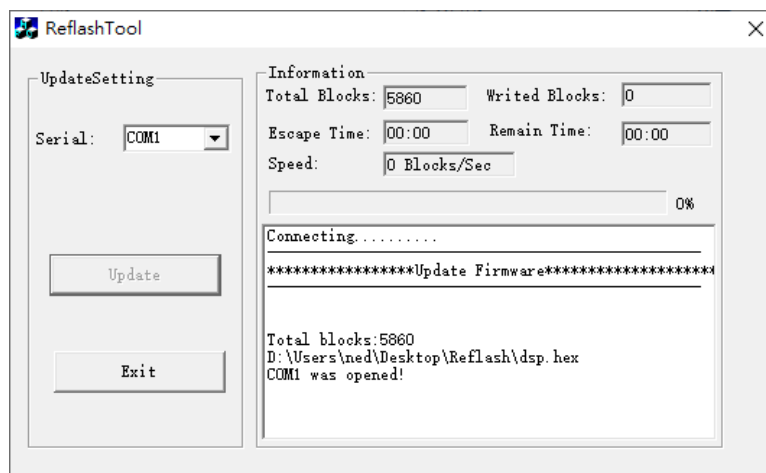


Figure 7



Figure 8

**Step5.** Once upgraded successfully, you can see the pup-up window as below. Please click “確定 (ok)” to close the pup-up window. Please refer to below picture.

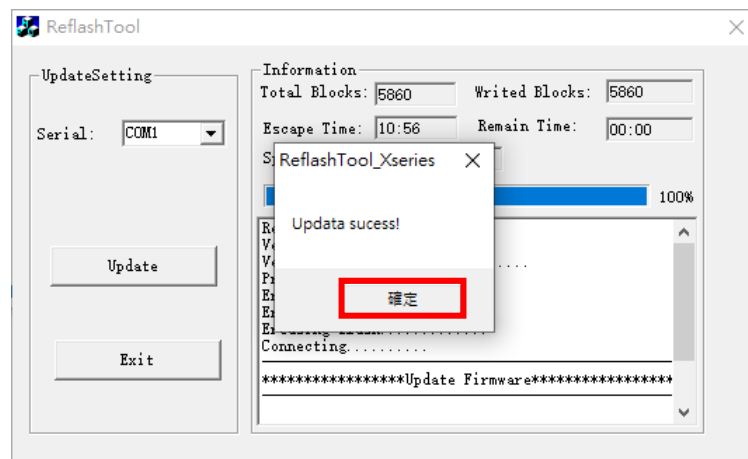


Figure 9

Click “Exit” to exit tool

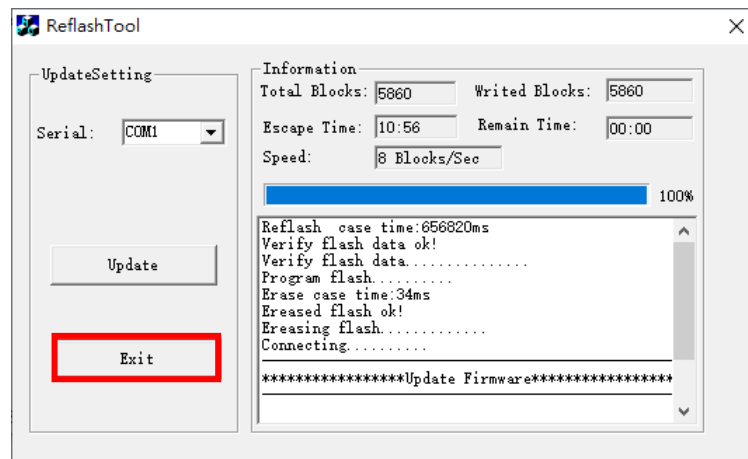


Figure 10

**Step7.** Please wait for about ten seconds. The LCD will return to main screen.



Figure 11

**Step8.** Please confirm the U1 firmware version is changed to 45.07 via LCD.